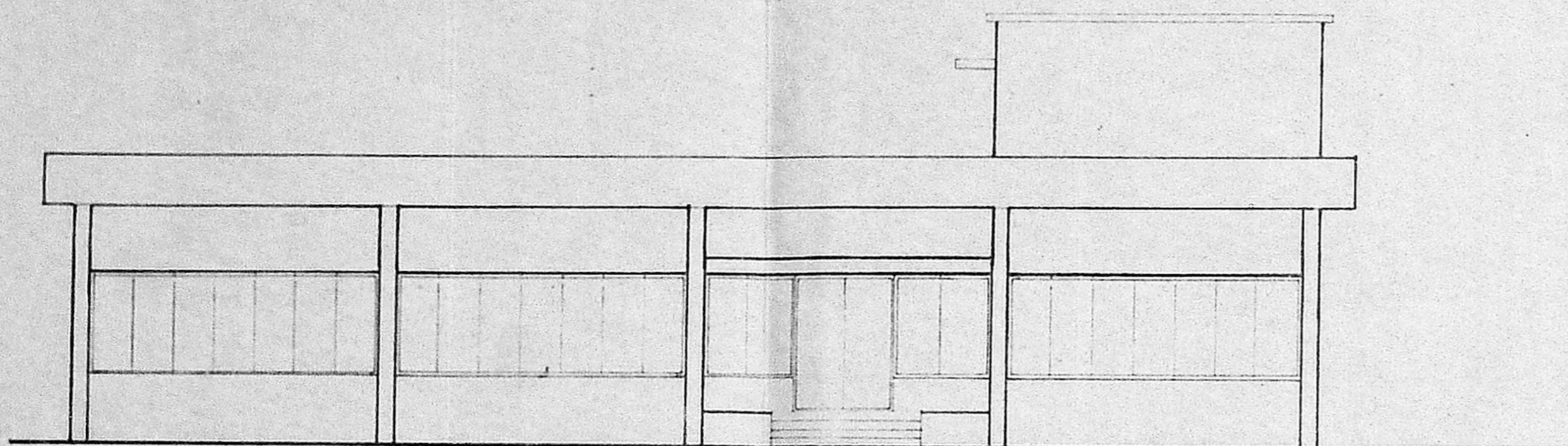


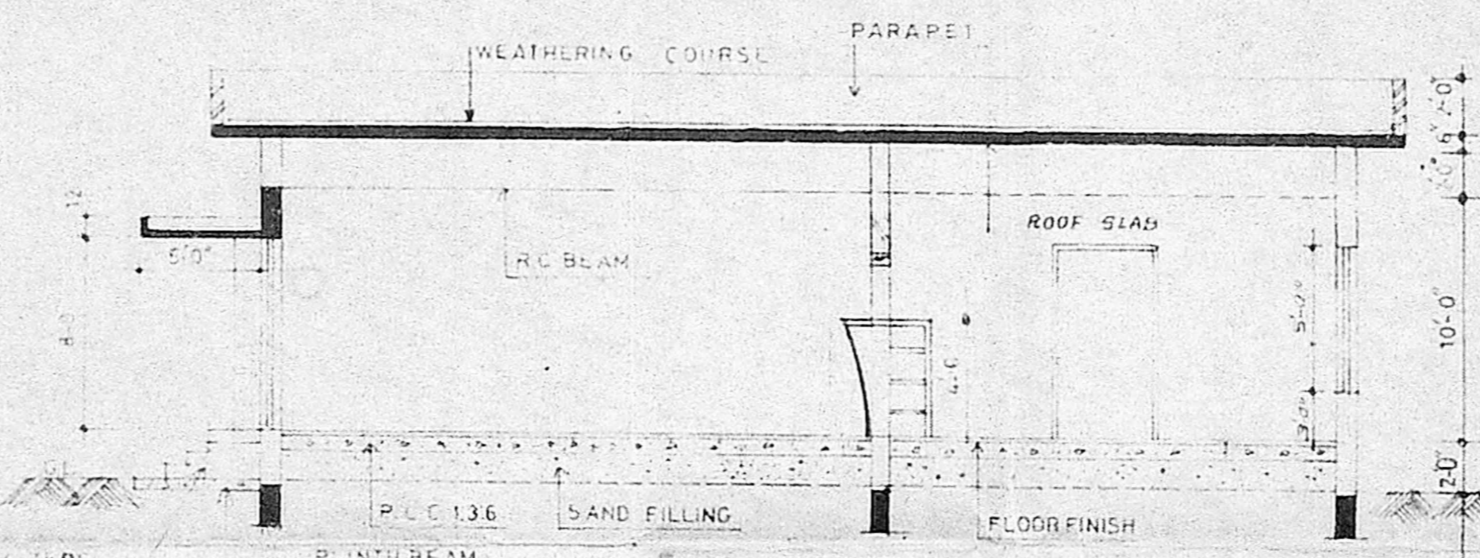
DESCRIPTION	SIZE (INCHES)	QTY	KW	HP	REMARK
1 STEAM RICE COOKER.CUM IDLI COOKER	26x26H	1	-	-	
2 DOUBLE JACKET COOKING POT/TILTING ARRANGEMENT	20x15H	2	-	-	
3 FOUR BURNER COOKING RANGE	92x24x30	1	-	-	
4 WORK/PREP.N.TABLE/ONE UNDER SHELF	60x24x30	5	-	-	
5 TWO BURNER COOKING RANGE	48x24x27	1	-	-	
6 WORK TABLE WITH SINK	60x24x34+6	2	-	-	
7 DOSA PLATE	48x24x34	1	-	-	
8 TWO CONTAINER BAIN MARIE	18x12x12	1	1.0	1	
9 6 CONTAINER BAIN MARIE	60x24x34	1	2.0	1	
10 REMOVABLE DUST BIN	18x18H	2	-	-	
11 STORAGE RACK FOR PROVISION/VEGETABLES	48x24x72	1	-	-	
12 STORAGE/POT RACK	48x24x72	1	-	-	
13 STORAGE RACK WITH MESH	48x24x72	1	-	-	
14 VEGETABLE CHOPING BLOCK	24x24x34	1	-	-	
15 COCONUT SCRAPER	-	1	-	-	
16 5KG GRINDER	25x20	1	0.5 HP	1	
17 10KG GRINDER	29x22	2	3/4 HP	3	
18 WATER COOLER	27x38	1	0.6	1	
19 ICE CREAM DISPLAY	54x24	1	0.6	1	
20 BEVERAGE DISPLAY	54x24	1	0.6	1	
21 WARM DISPLAY	54x24	1	1.0	1	
22 SOUTH INDIAN SNACK COUNTER	60x24x34+16	1	1.0	1	
23 MAIN SNACK COUNTER	60x24x34+16	1	2.0	1	
24 DISPENSING COUNTER	60x24x34+16	1	-	-	
25 PANTRY SERVICE COUNTER	74x24x34+6	1	-	-	
26 TEA/COFFEE-MILK BAIN MARIE	36x12x16	1	2.0	1	
27 4 LID ICE CREAM STORAGE FREEZER	84x36	1	0.6	1	
28 3 LID BEVERAGE BOTTLE COOLER	84x36	1	0.6	1	
29 AIR HANDLING EOPT.	-	1	17.5	1	
30 AIR CONDITIONER	-	7	25x7	1	

PLAN SHOWING THE PROPOSED INSTALLATION OF 67.5 HP TO THE EXISTING RESTAURANT

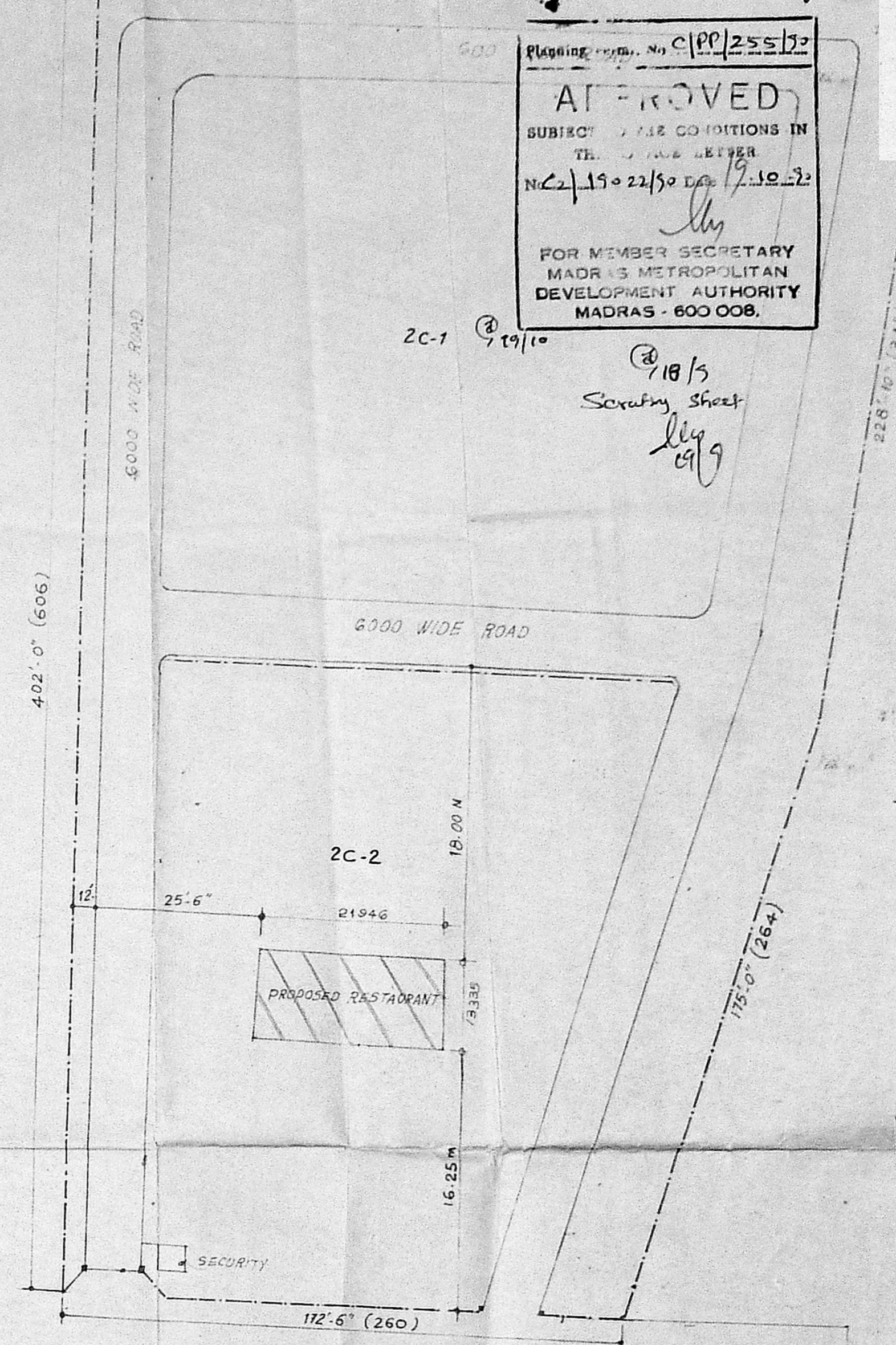
EXISTING MMDA APPROVED NO: C2/15326/88.DT.6.2.89



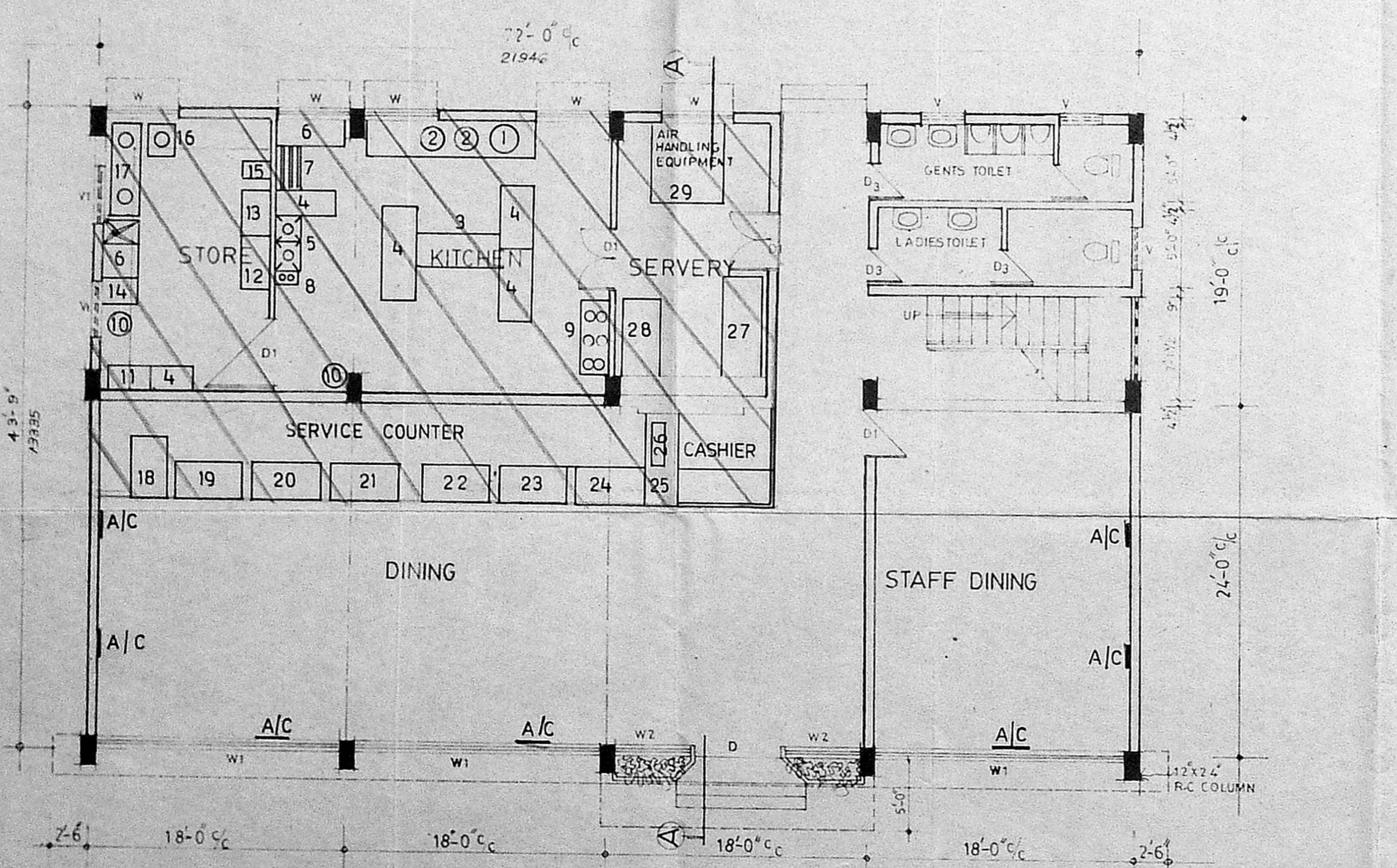
FRONT ELEVATION



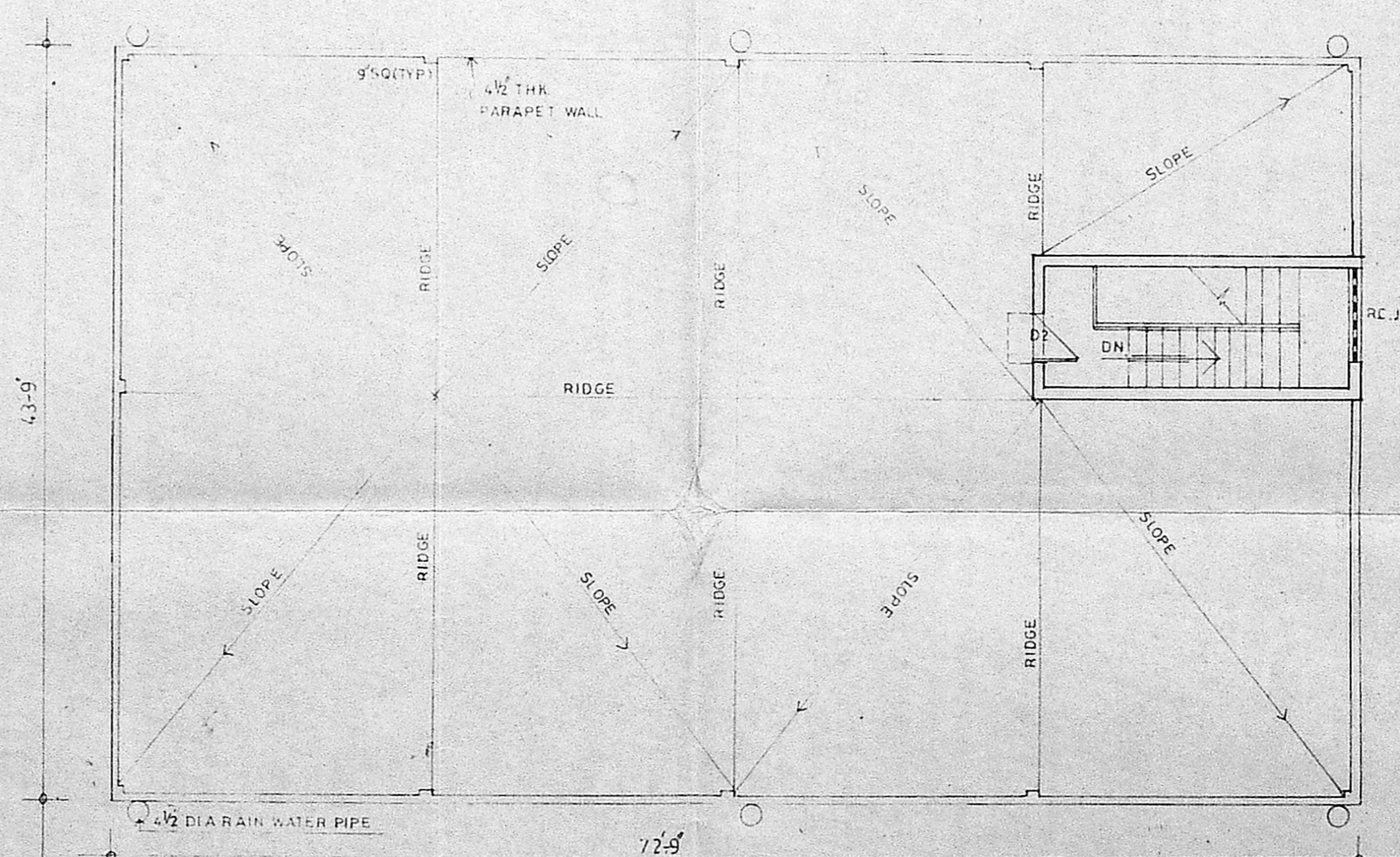
SECTION A-A



SITE PLAN SHOWING PROPOSED RESTAURANT



GROUND FLOOR PLAN



TERRACE FLOOR PLAN

TYPE	WIDTH	HEIGHT	DESCRIPTION
D1	6'-0"	8'-0"	ALUMINIUM GLAZED DOOR
D2	4'-0"	8'-0"	TEAK WOOD FLUSH DOOR
D3	3'-0"	7'-0"	"
D4	2'-0"	7'-0"	T.W. PANELLED DOOR
W	5'-0"	6'-0"	T.W. GLAZED WINDOW
W1	17'-6"	6'-0"	ALU GLAZED WINDOW
W2	5'-0"	6'-0"	ALU GLAZED WINDOW
V	3'-0"	2'-0"	T.W. GLAZED VENTILATOR
V1	4'-0"	7'-0"	T.W. GLAZED VENTILATOR

APPROVED
SUBJECT TO THE CONDITIONS IN THE...
MADRAS METROPOLITAN DEVELOPMENT AUTHORITY
MADRAS - 600 008.

18/5
Security Sheet
19/9

PROPOSED WORK SHOWN THUS
C. SRINIVASA RAO S. I.R.S.E.F.I.L.
Titanium Equipment and Anodizing Manufacturing Company Limited
MADRAS - 48, VANDALUR.

PLAN, SECTION & ELEVATION FOR RESTAURANT OF SURVEY NO: 261/B/2C

M/SC.R. NARAYANA RAO, ARCHITECTS & ENGINEERS
LUZ, MADRAS. 4

For TITANIUM EQUIPMENT AND ANODIZING CO. LTD.
C. S. RAMESH, President.

B. TECH (HONS) IN S.I.L.L. PH.D.; ASSOC. M. AM. SOC. CE. FIE, FIE, R.E.G.D. ARCHITECTS

DRN: MN DATE 16-2-88
CHD SCALE 1/8"=1'-0"

DRG NO: MN/1432/88